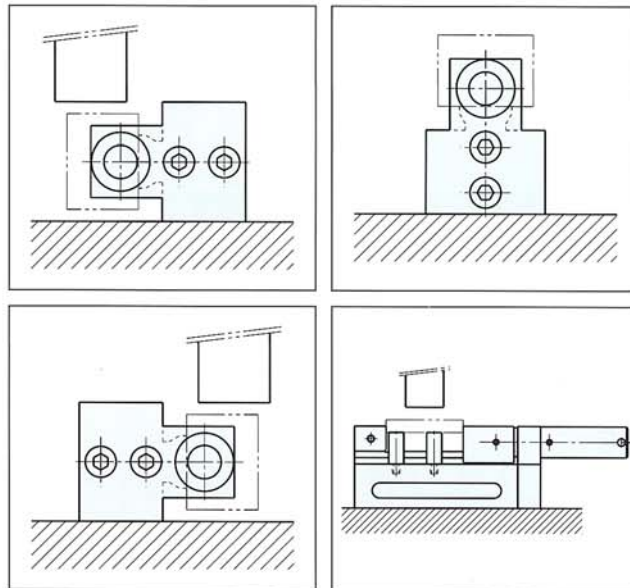


FEATURES

- Can grind 3 faces by one-chuck, and shorten set-up time drastically.
- Most suitable for making punches for machining lead-frame.
- Parallellism and squarness are both within 0.003mm.
- With setting pin in tapped holes on both sides of sliding face and by self-cut of it, most accurate height adjusting jigs can be set.
- Materials are alloy steel(SKS31), and hardned HRC57-62.

USAGE



SIZE

No.	A	B	C	D	E	F	G	H	I	J	K	L	M	N	O	P	Q	R	S	T	U	V	W	X	Y	Z
3DV-20	163	99	15	49	20	30	57	30	7	20	20	41	35	19.5	20	60	8	10	3	M 6	M4	M4	10	22	25	25
3DV-30	216	129	18	69	30	50	65	35	10	20	25	61	40	24.5	20	90	8	12	5	M10	M4	M6	14	36	33	30
3DV-40	228	141	18	69	40	60	85	45	10	30	32	61	45	28	20	100	10	12	5	M10	M4	M6	14	36	40	30

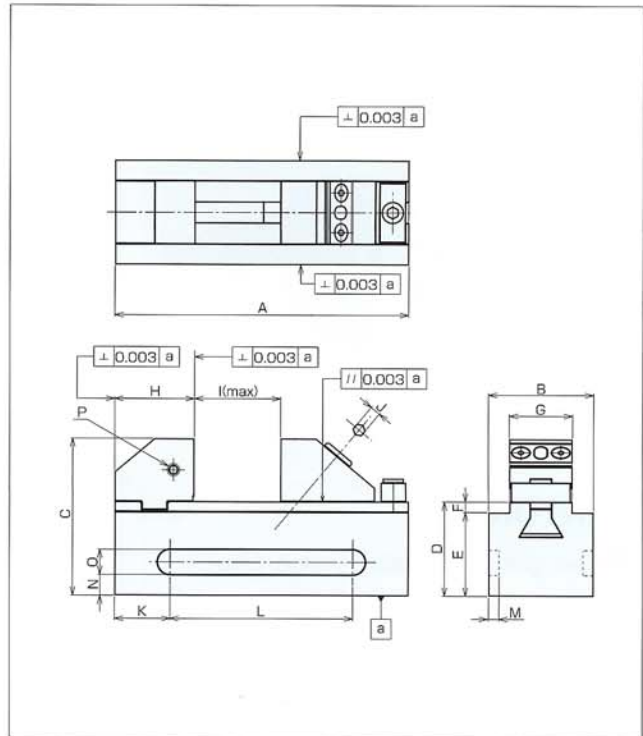
SPEC

No.	Jaw Width	Jaw Depth	Jaw Opening	Total Length	Total Height	Weight(kgs)
3DV-20	20	20	41	163	57	1.0
3DV-30	30	20	61	216	65	2.7
3DV-40	40	30	61	228	85	4.7



FEATURES

- Can grind 3 faces by one-chuck, and shorten set-up time drastically.
- Compact size without handle.
- Most suitable for profile grinding, and machining IT concerned minimum parts.
- Materials are alloy steel (SKS31) and hardened to HRC57-62.



SIZE

No.	A	B	C	D	E	F	G	H	I	J	K	L	M	N	O	P
3DV-20TH	105	40	55	35	30	5	20	24	40	3	20	60	3	8	10	M4
3DV-30TH	140	50	75	45	40	5	30	38	45	4	26.5	87	5	10	12	M6
3DV-40TH	160	60	90	50	45	5	40	38	50	5	20	120	5	10	12	M6

D dimension's tolerance is ± 0.005

SPEC

No.	Jaw Width	Jaw Depth	Jaw Opening	Total Length	Total Height	Weight(kgs)
3DV-20TH	20	20	40	105	55	1.2
3DV-30TH	30	30	41	140	75	2.7
3DV-40TH	40	40	50	160	90	4.4

USAGE

