

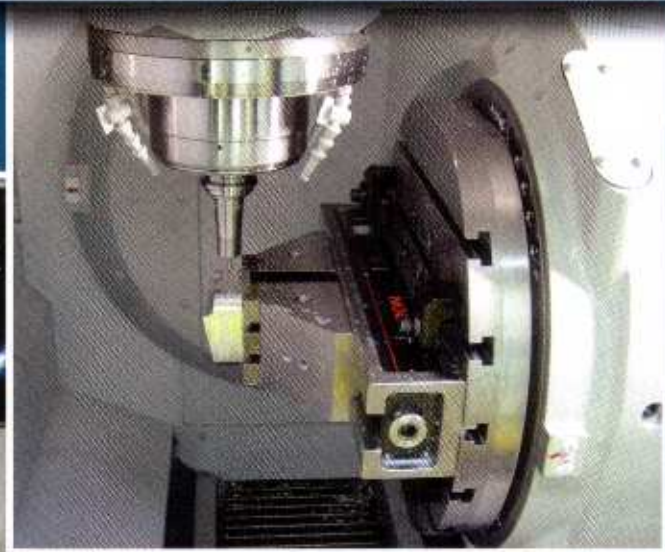
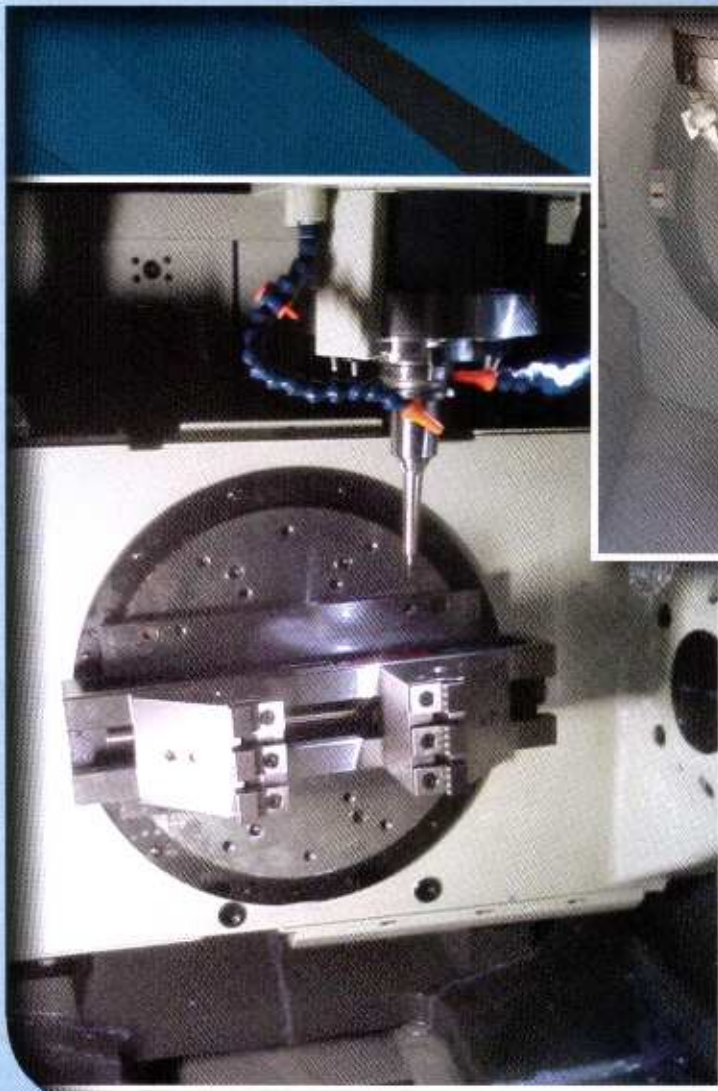
NEW

No.E-940,940B PAT.P

LT5AU-100 LOCK-TIGHT 5 AXIS MACHINE VISES

DEFINITIVE EDITION FOR 5 AXIS MACHINING CENTRE!

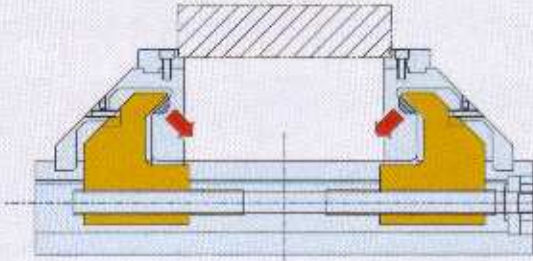
ANTI-FLOATING DEVICE, LEVEL RAISING
CONSTRUCTION, COMPACT SIZE.



ADVANTAGES OF LT5AU-100

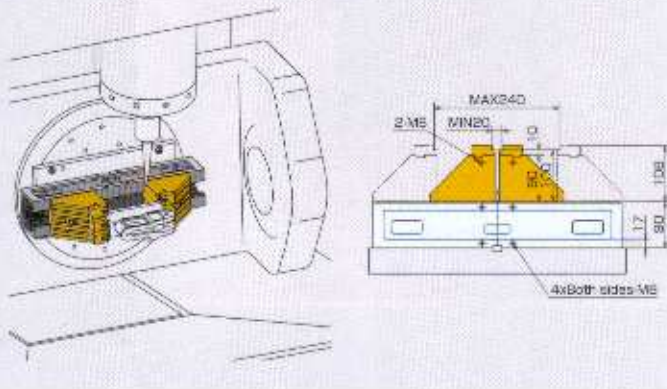
1 ANTI-FLOATING DEVICE

- MINIMIZED JAW LIFT AND TILT.
- BOTH JAWS MOVE TO CENTRE AT THE SAME TIME.



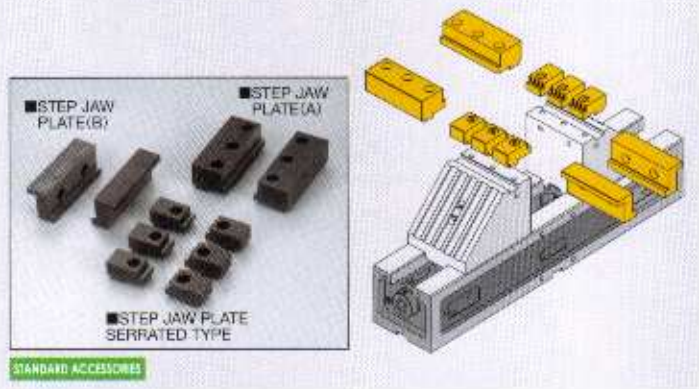
2 LEVEL RAISING CONSTRUCTIONS

- LESS INTERFERENCES WITH MAIN SPINDLES.



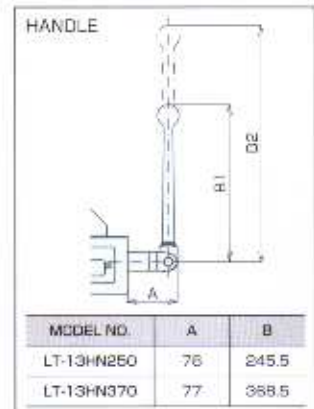
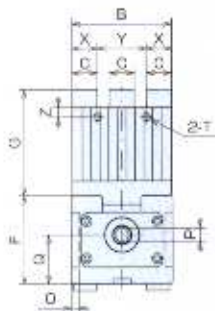
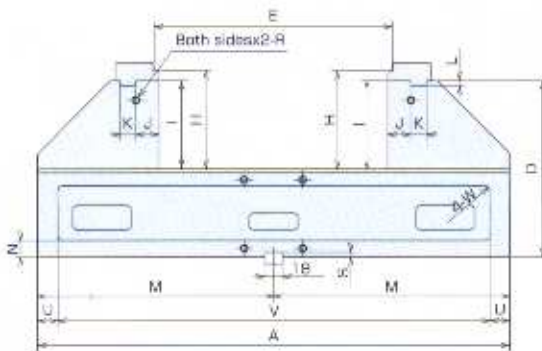
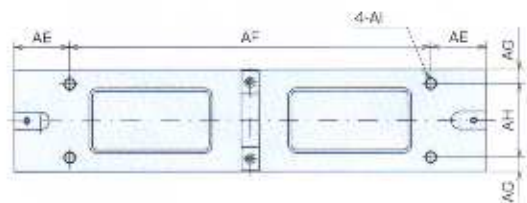
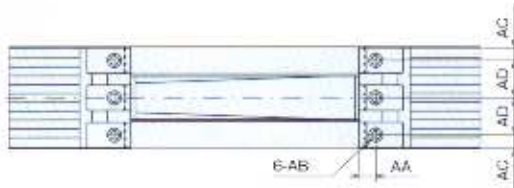
3 3 TYPES OF INTER-CHANGEABLE JAW PLATES

- STEP JAWS (A) (B) AND SERRATED JAWS.



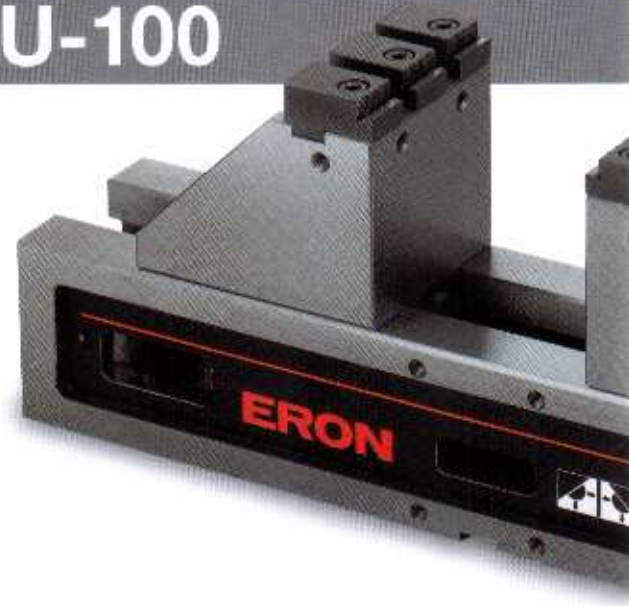
SPECIFICATIONS FOR LT5AU-100

E-940



A	B	C	D	E	F	G	H	I	J	K	L	M	N	O	P	Q	R	S	T	U	V	W	X	Y	Z	AA	AB	AC	AD	AE	AF	AG	AH	AI
484	102	26	180	20-240	90	108	100	90	24	16	5	242	17	7	13	50	M8	5	M8	20	444	R5	28	60	10	17	M9	13	38	E7	370	14.5	75	M12

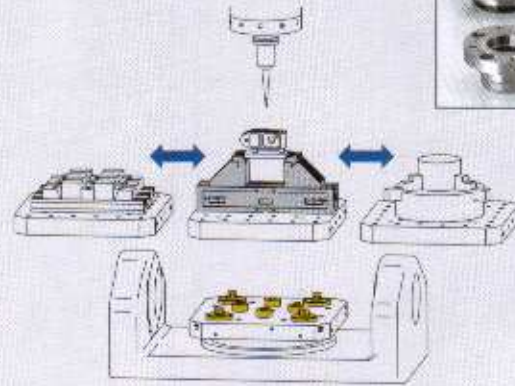
ORDER NO.	MODEL NO.	TOTAL LENGTH	JAW WIDTH	JAW OPENING	TOTAL HEIGHT	BODY HEIGHT	WEIGHT (KGS)	MAX CLAMPING FORCE
87470	LT5AU-100	484	102	240	198	90	32	20





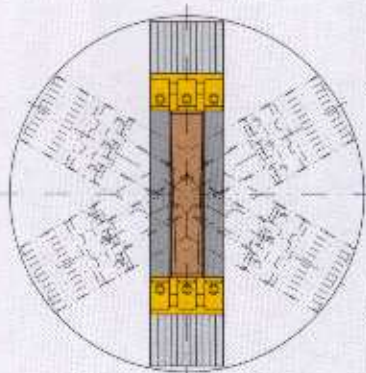
PROPOSAL FOR QUICK CHANGE OF JIGS

- QUICKEST LOCATING AND CLAMPING BECOME POSSIBLE BY USING Q-LOCK SYSTEM.



4 COMPACT DESIGN

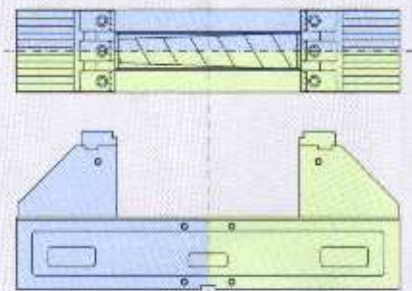
- ROTATION WITHIN DIA.500MM.
- INSERT TYPE OF HANDLES FOR BETTER BALANCE AND LESS INTERFERENCES.



□500, φ500 TABLE LAY-OUT

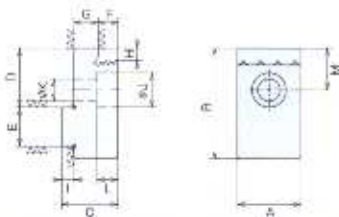
5 SYMMETRIC SHAPE DESIGN

- SYMMETRIC DESIGN FOR EASY PROGRAMING AND EFFECTIVE MACHINING.



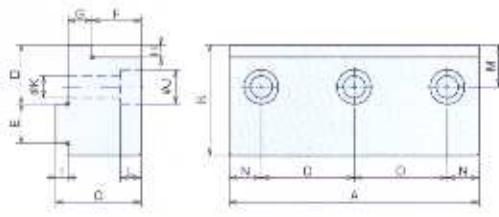
INTER-CHANGEABLE JAW PLATES

- STEP JAW PLATES SERRATED TYPE E-940B STANDARD ACCESSORIES



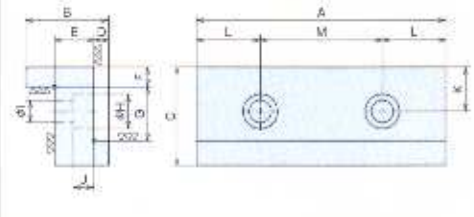
A	B	C	D	E	F	G	H	I	J	K	L	M
26	45	23	24	16	8	10	5	5	14	9	8.5	17
ORDER NO.						MODEL NO.						
89807						LTSAU-100SJG-9						

- STEP JAW PLATE(A) E-940B STANDARD ACCESSORIES



A	B	C	D	E	F	G	H	I	J	K	L	M	N	O
102	45	35	24	18	20	10	6	5	14	9	8.5	17	13	36
ORDER NO.						MODEL NO.								
89808						LTSAU-100SJ-20								

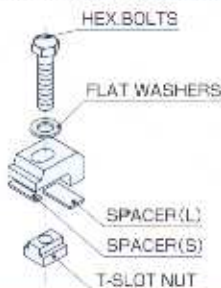
- STEP JAW PLATE(B) E-940B STANDARD ACCESSORIES



A	B	C	D	E	F	G	H	I	J	K	L	M
102	34	40	6	16	9	22	14	9	9.5	18	26	50
ORDER NO.						MODEL NO.						
89809						LTSAU-100SJ-30						

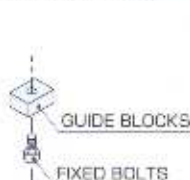
MOUNTING CLAMPS

- BCS-18Q1 STANDARD ACCESSORIES
(MOUNTING BOLT M16, T-SLOT SIZE 18MM)



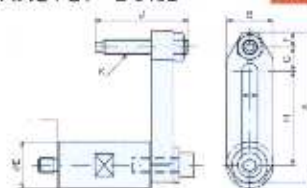
GUIDE BLOCKS

- LTGB18-18 STANDARD ACCESSORIES
(FOR T-SLOT 18MM)

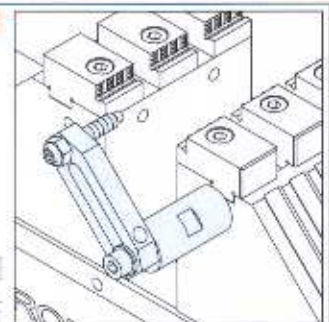


OPTIONAL PARTS

- WORKSTOP E-940B OPTIONAL PARTS



A	B	C	D	E	F	G	H	I	J	K
80	25	12	50	25	17	13	50	8.5	50	W6
ORDER NO.						MODEL NO.				
89811						LTSAU-100-WST				



USAGE

MACHINERY

BRAND NAME	MODEL NO.	TABLE WIDTH	TABLE LENGTH	MAX LOAD(KGS)
OKUMA	MU500-VA	φ500	φ500	500
O K K	VG5000	□500	□500	600
D M G	DMU50	φ630	500	200
	DMU70	φ800	620	350
MAKINO	a81(M)-5XR	φ500	φ500	520
	a82(M)-5XR	φ500	φ500	520
	A100ε-5XR	φ800	φ800	900
	MC1010-5XA	□630	□630	1,000
	MC1013-5XA	□630	□630	1,000
MATSUURA	MAM72-63V	φ500	φ500	400
	MAM72-63V PC2	□500	□500	400
MITSUI SEIKI	HU63-T	φ600	φ600	300
	HU50A-5X	□500	□500	650
	HU63A-5X	□630	□630	800
	HU80A-5X	□800	□800	1,200
	vertex550-5X	φ400	φ400	350
MORI SEIKI	NMV5000DCG	470	φ500	300
	NMH6300DCG	□630	□630	800
YASDA	YBM700N-TT	500	φ500	450
MAZAK	VARIAXIS500-5XII	400	φ500	300
	VARIAXIS630-5XII	500	φ630	500
	VARIAXIS730-5XII	500	φ630	500

 SINCE 1560
NABEYA CO., LTD.

Head office: 25 wakasugicho, Gifu, Japan
TEL: (058)-273-6521 FAX: (058)-278-0220
URL: <http://www.nabeysa.co.jp> E-mail: nabeysa@ons.co.jp

China sales company:
TOP-CEL INTERNATIONAL TRADING (SHANGHAI) CO., LTD.
18A, BLOCK2, XIN HUA BUILDING, 543
XIN HUA ROAD, SHANGHAI, P.R.C
TEL: (021) 6441 3330, 6441 3332, 64280232, 64695982
FAX: (021) 64695985
URL: <http://www.topcel.net> E-mail: topcel@sh163.net

Singapore sales company:
ERON TOOLING CO., LTD.
564 GEYLANG ROAD, SINGAPORE 389512
TEL: (65) 6742-3741 FAX: (65) 6742-5945
URL: <http://www.erontool.com> E-mail: sales@erontool.com

DISTRIBUTOR: